

**activeMEDICAL**

# Juvo Shower Commode

Prescription Form



## Form Information

### Dealer Information

Date	/	/	Sales Rep	
Street Address			Email	
Suburb			Phone	
Postcode		State	Fax	

### Client Information

Date	/	/	Full Name	
Contact			Street Address	
Funding Number			Suburb	
Plan Date - Start to Finish		to	Postcode	State
Plan Manager			Client Weight	kg

### Funding Type

<input type="checkbox"/>	M.A.S.S.	<input type="checkbox"/>	NDIS	<input type="checkbox"/>	Homecare Package	<input type="checkbox"/>	Other: _____
--------------------------	----------	--------------------------	------	--------------------------	------------------	--------------------------	--------------

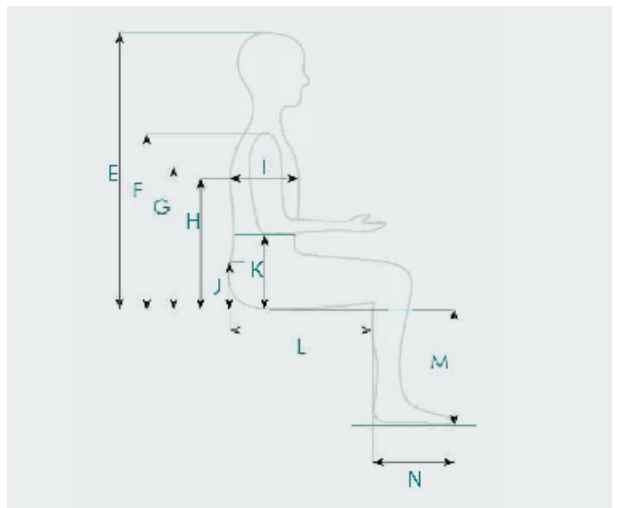
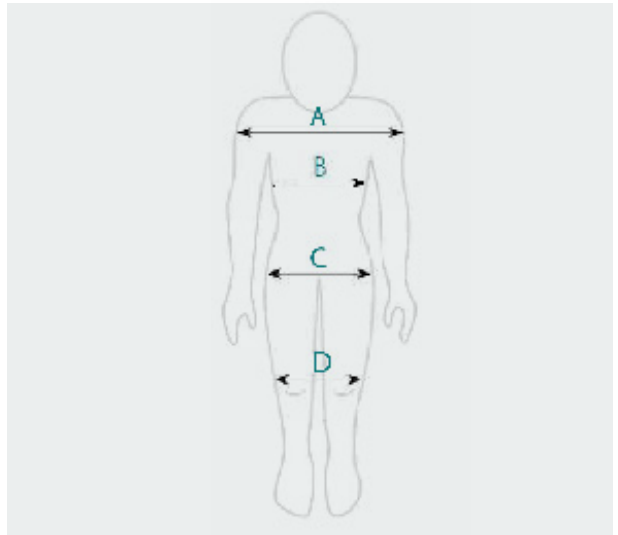
### Prescriber Information

Date	/	/	Email	
Full Name			Street Address	
Organisation			Suburb	
Mobile			Postcode	State
Office Phone				

## Comments

# Commode Measuring / Assessment Guide

A	Shoulder Width		mm
B	Chest Width		mm
C	Hip Width		mm
D	External Knee Width		mm
E	Sitting Height		mm
F	Shoulder Height	mm	mm
G	Axilla Height	mm	mm
H	Scapula Height	mm	mm
I	Trunk Depth		mm
J	PSIS Height		mm
K	Elbow Height	mm	mm
L	Sitting Depth	mm	mm
M	Lower Leg Length with Shoes	<input type="checkbox"/> Yes <input type="checkbox"/> No	mm
N	Foot Depth		mm



# Toilet / Bathroom Information

A	Toilet Height		mm
B	Toilet Width		mm
C	Distance from Walls		mm

Add a photo of your bathroom:



# Model Information

## Model

Attendant Propelled with Sliding Footplate
Attendant Propelled with Swingaway Footrests
Self Propelled with Sliding Footplate
Self Propelled with Swingaway Footrests
Tilt in Space Commode      Electric      Tilt
Tilt and Recline Commode
High-Low (Electric Standard)
Trix 3 in 1 Shower Commode

## Seat Width (mm/inch)

360 / 14
410 / 16
460 / 18
510 / 20
560 / 22
610 / 24
660 / 26
710 / 28

## Height Adjustable (Width - mm / inch)

360 / 14	410 / 16
460 / 18	560 / 22
610 / 24	660 / 26

## Anterior Seat Height

595 mm	565 mm	535 mm	505 mm
--------	--------	--------	--------

## Folding Self Propelled (Width- mm / inch)

410 / 16	460 / 18	510 / 20
----------	----------	----------

## Folding Attendant Propelled (Width- mm / inch)

410 / 16	460 / 18	510 / 20
----------	----------	----------

## Comments

# Armrest Information

## Waterfall PU Armrest



## 50mm Extension Safety Arm



## Transfer Bar Safety Arm



## Padded Armrests

40 mm

50 mm

Supplier Standard



## Arm Trough

Right

Left

Both



## The Armrest Height

Low Setting 200mm

Standard Setting 240mm



## Lockdown Arm Kit



## Slip on Lockdown Arm Kit



## Comments

# Seat Information

## Impress Seat (Width)

460 mm



## PU Open Front Dual Indent

460 mm



## PU Seat Closed Front (Width)

410 mm

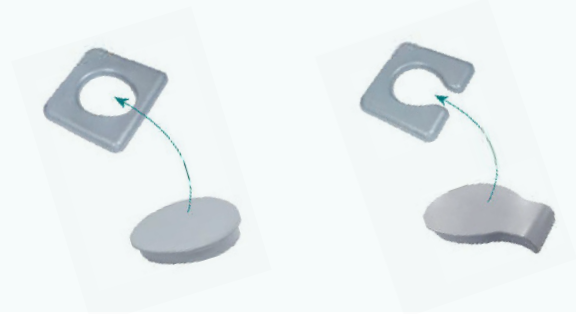
460 mm



## Aperture Closure Panel

Closed

Open



## PU Seat Open Front (Width)

360 mm

410 mm

460 mm

510 mm

560 mm

610 mm

660 mm

710 mm

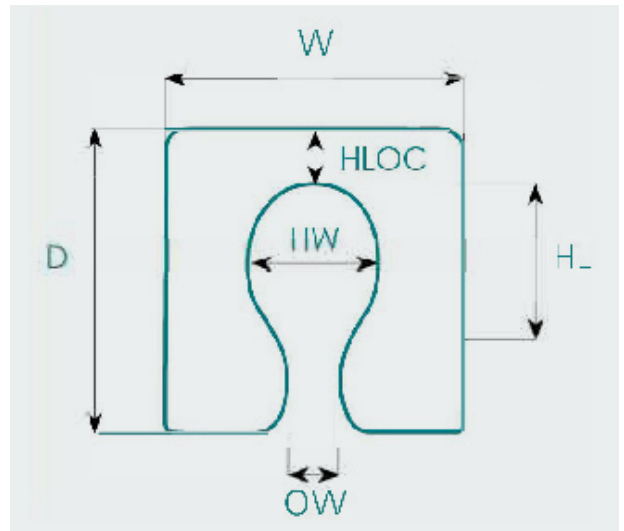


## Notes

# Custom Seat Information

Rear	Front	Cut Out	Indent / Bite*
Open	Open	Left	Left
Closed	Closed	Right	Right
			Both

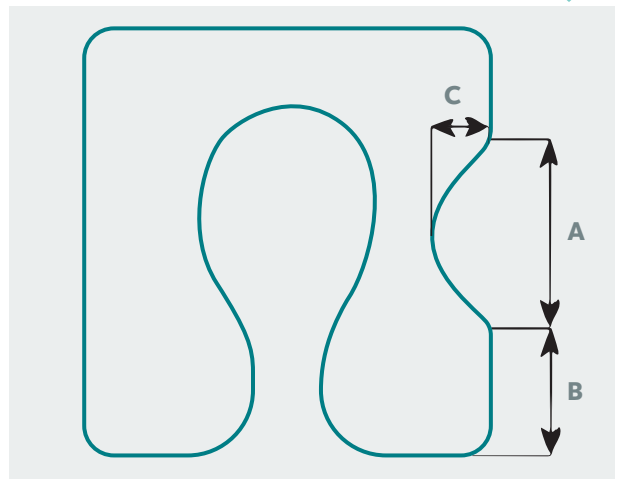
	Seat Thickness		mm
<b>W</b>	Width		mm
<b>D</b>	Depth		mm
<b>HL</b>	Aperture Length		mm
<b>HW</b>	Aperture Width		mm
<b>HLOC</b>	Aperture Location		mm
<b>OW</b>	Opening Width		mm



## \* Indent / Bite Dimensions (if applicable)

<b>A</b>	Bite Width		mm
<b>B</b>	Bite Location		mm
<b>C</b>	Bite Depth		mm

Other Comments



## Add photo or drawing of custom seat



# Footplates / Leg Information

## Angle Adjustable Footrest

Left

Right

Both



## Elevating Legrest

Left

Right

Both



## Stump Support

Left

Right

Both



## Leg Extension



## One Piece Footplate



## Vertical Legrest



## Standard Legrest



## Neoprene Footplate Padding



## Shorten Length Std Legrest (up to 60mm)

Specify: \_\_\_\_\_

## Offset Legrest

Left

Right

Both

### Options Include:

1 inch Outward

1 inch Inward





# Backrest Information

## Short Style (to suit Tilt-In-Space)



## Angle Adjustable Backrest

3 Strap  
(340mm high to top strap)

4 Strap  
(415mm high to top strap)



## Wheelchair Style Backrest

3 Strap  
(340mm high)

4 Strap  
(415mm high)



## Backrest Extension

4 Strap  
(415mm high)

5 Strap  
(490mm high)

6 Strap  
(570mm high)



# Headrest Information

## Standard Contoured



## Small / Banana



## Notes or Other Modifications

# Body Support Information

## Bodypoint Aeromesh

Small

Medium

Large



## Calf Support Strap (Width)

410 mm

460 mm

510 mm



## Chest Pelvic Strap

Position

mm



## Drop Down Pommel



## Thoracic Support

Right

Left

Both

Height From Seat

Width

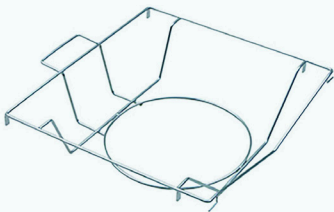


mm

mm

# Hygiene Information

## Pan / Bowl Carrier



## Bowl with Lid & Handle



## Bed Pan (1990)



# Modifications

## Modify Pan Rack to suit:

Left Access

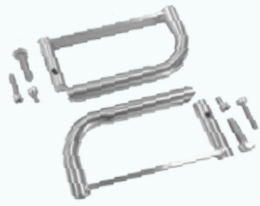
Right Access

Both Side Access

Complete (for clearance)

# Castors & Wheel Accessories

Rear Castor Extension (175mm)



Front Castor Extension (75mm)



Height Adjustable Kit

24" Self Propelled  
Wheel Kit

Standard Castors x 2  
(to replace Self Propel)

## Comments

Save As

Print

Email

**activeMEDICAL**  
SUPPLIES > SOLUTIONS > SUPPORT

**P.** 1800 267 267 | **F.** 07 3899 8825  
**E.** [hello@activemedicalsupplies.com.au](mailto:hello@activemedicalsupplies.com.au)

---

**[www.activemedicalsupplies.com.au](http://www.activemedicalsupplies.com.au)**